

MDG76PC

MAYTAG® COMMERCIAL
MULTI-LOAD DRYER



LEGENDARY MAYTAG DEPENDABILITY

Maximizing your equipment investment for over a half century.



EVEN DOORWAYS DON'T STOP

Maytag offers a 75-lb. capacity EZFIT™ dryer that fits through a standard 36"-door opening, making installation simple. The wide basket paired with a shallow overall depth provides great tumbling action for more drying power in less floor space.

FOR YOUR CUSTOMERS:

- 75-Lb. Capacity
- Fast, Efficient Drying
- Dries Large Loads And Big, Bulky Items
- Extra-Large Door Opening
- Microprocessor Controls

FOR YOUR OPERATION:

- Fits Through A 36" Door
- Programmable Controls
- Easy-To-Change Cycle Times, Temperatures And Prices
- Easy-Clean Lint Filter

BUILT-TO-LAST™ FEATURES:

- Totally Enclosed Motor And Cabinet
- Heavy-Duty Steel Door
- Best Warranty In The Business—5 Years On All Parts



LAUNDRY SOLUTIONS
YOU CAN **DEPEND ON.**

**75-LB. EZFIT™ DRYER FITS
THROUGH A 36" DOOR OPENING**

visit maytagcommerciallaundry.com



OUR COMMITMENT TO DEPENDABLE QUALITY

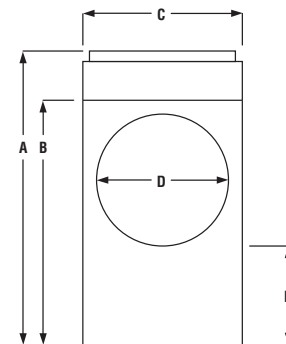
At Maytag, we believe durable goods should remain just that. That's why every Maytag® product is constructed of the highest-quality materials and with the utmost in precision craftsmanship. It's also why we stand behind our equipment with solid service and support from our professional Maytag laundry suppliers. Simply put, when you choose Maytag® products, you ensure your peace of mind.



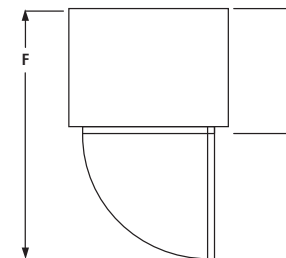
MDG76PC MAYTAG® COMMERCIAL MULTI-LOAD DRYER

Maytag® Commercial Multi-Load Dryer MICROPROCESSOR COIN-DROP

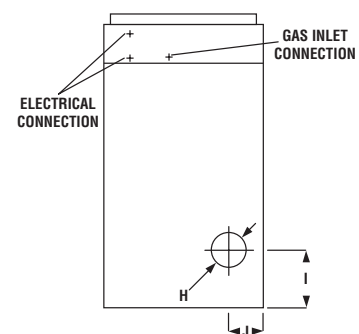
DRYER SPECIFICATIONS	
MODEL	MDG76PC
MOTOR	
Single-phase, thermoprotected against overload, auto-reset	•
Drive motor — HP (kw)	1 (.75)
Voltage/breaker size: 120 volts/1 PH — amps	20
Airflow — cfm (cmm)	1,200 (34)
Gas rating — BTU/hr. (kcal/hr.)	204,000 (51,408)
Gas inlet — M.N.P.T. in. (mm)	1 inlet, ¾ F.N.P.T. (18.0)
CAPACITY	
Lbs. (kg)	75 (34)
Cu. Ft. (cu. m)	22.4 (.634)
Tumbler depth — in. (mm)	24.88 (632)
Tumbler diameter — in. (mm)	44.5 (1130)
COLORS	
White	•
Stainless Steel	•
APPROXIMATE WEIGHT	
Crated — lbs. (kg)	938 (425)
Uncrated — lbs. (kg)	888 (403)
DIMENSIONS	
A) Height — in. (mm)	84.3 (2141)
B) Height with top removed for ease of installation — in. (mm)	70¾ (178.8)
C) Width — in. (mm)	46.19 (1173)
D) Door opening diameter — in. (mm)	34 (863)
E) Floor to bottom of door — in. (mm)	28¾ (721)
F) Depth with door open 90° — in. (mm)	72 (1830)
G) Depth including handle — in. (mm)	36 (914)
H) Exhaust duct diameter — in. (mm)	10 (254)
I) Floor to exhaust outlet center — in. (mm)	16¾ (425)
J) Side to exhaust outlet center — in. (mm)	10 (254)
See specific instructions for proper installation. Because of continuous product improvement, Maytag reserves the right to change specifications without notice.	



FRONT VIEW



PLAN VIEW



BACK VIEW



NEW YORK CITY
M.E.A.



THE BEST WARRANTY IN THE BUSINESS— 5 YEARS ON ALL PARTS

For a period from the date of original purchase through the time listed above, the designated parts that fail in normal commercial use will be repaired or replaced free of charge for the part itself, with the owner paying all other costs, including labor, transportation and customs duty. Chemical damage is excluded from all warranty coverage. See complete warranty for details.